

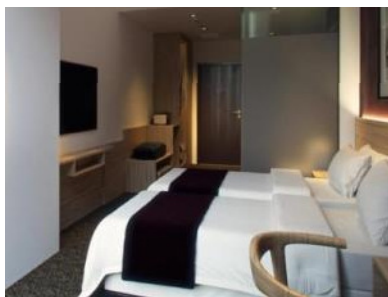
3日2夜 [出發日期: 至2019年9月30日]

3 Days 2 Nights [Travel Period: Till 30Sep2019]



✓ 來回國泰航空經濟客位機票
Round trip economy class air ticket on CX

✓ 2晚酒店住宿連早餐
2 nights hotel accommodation with daily breakfast



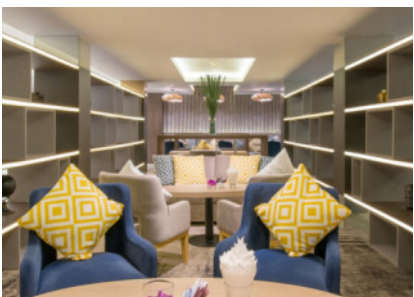
Bay Hotel Ho Chi Minh

★★★

www.bayhotelhcm.com

📍 District 1 🏠 Superior

成人佔半房
每位 **\$2280+**



Eastin Grand Hotel Saigon

★★★★

www.eastinhotelsresidences.com/en/eastingrandsaigon/default.html

📍 Phu Nhuan District 🏠 Superior

成人佔半房
每位 **\$2460+**



Lotte Legend Hotel Saigon

★★★★

www.lottehotel.com/saigon/zh

📍 District 1 🏠 Deluxe City View

成人佔半房
每位 **\$2920+**

※ 套票以淡季價格計算，於旺季、假期前夕或大型節日期間出發，需另付附加費。詳情向本社職員查詢作準。

3日2夜 [出發日期: 至2019年9月30日]

3 Days 2 Nights [Travel Period: Till 30Sep2019]



✓ 來回國泰航空經濟客位機票
Round trip economy class air ticket on CX

✓ 2晚酒店住宿連早餐
2 nights hotel accommodation with daily breakfast

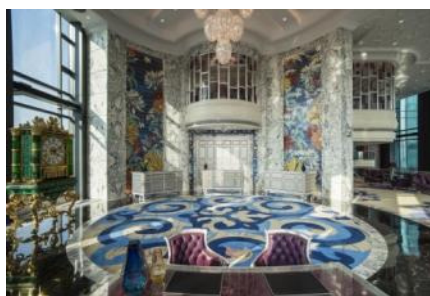


Caravelle Saigon

★★★★★ www.caravellehotel.com

District 1 Deluxe

成人佔半房
每位 **\$3000+**



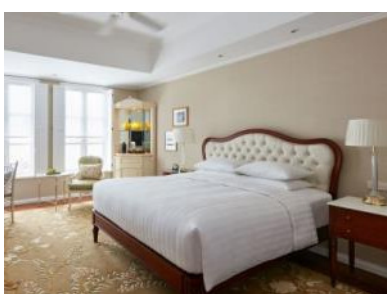
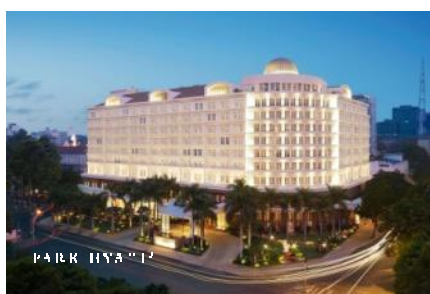
The Reverie Saigon

★★★★★ www.thereveriesaigon.com

District 1 Deluxe

Jul-Sep:

成人佔半房
每位 **\$4170+**



Park Hyatt Saigon

★★★★★ www.hyatt.com/en-US/hotel/vietnam/park-hyatt-saigon/saiph

District 1 Park City View

29Jul-30Sep:

成人佔半房
每位 **\$4250+**

※ 套票以淡季價格計算，於旺季、假期前夕或大型節日期間出發，需另付附加費。詳情向本社職員查詢作準。

3日2夜 [出發日期：至2019年9月30日]

3 Days 2 Nights [Travel Period : Till 30Sep2019]



國泰航空 胡志明市機票附加費表

CX Ho Chi Minh Airfare Surcharge

出發日期：2019年7月29日- 9月31日

Travel Period : 29Jul – 31Sep2019

2 人成行 GV2 (min. 2 adults)					
Departure		Adult	Child	Booking class	Ticket validity
Economy Class	23Aug-26Sep, 29-30Sep	---	---	Q	2-7 days
		\$240	\$180	N	
	29Jul-22Aug, 27-28Sep	540	410	S	
Premium Economy Class	29Jul-30Sep	1740	1310	E	
Business Class	29Jul-31Sep	2640	1980	I	

Price Includes :

- Round trip economy class air ticket on CX
- 2 nights hotel accommodation with daily breakfast
- HK\$100,000 Travel Insurance [Zurich Insurance(Hong Kong) 24-hour emergency hotline+852-2886-3977]
- 0.15% TIC Levy

Child travel with min 2 adults price :

- Twin sharing / Extra bed adult price less : \$330

Terms & Conditions :

- Package price is per person (in HK\$) and valid between **29Jul-30Sep19**; and hotel stay must be completed by 30Sep
- Booking class : Q (except specified periods) Ticket validity : 2-7 days
- Twin room is based on 2 single beds or 1 double bed
- Minimum 2 adults traveling together on same outbound & inbound flights, and booking must be reserved under the same record locator (PNR) for all passengers
- "OSI : KA HTL PKG FARE HOTEL NAME IN DATE OUT DATE" and "OSI : KA SIT - 2 FARE x MIN 2 PASSENGERS TRAVEL TOGETHER" must be input in OSI field of PNR
- Airport tax, HK security charge & fuel surcharge (if any) are not included
- Hotel star ratings are for reference only, please visit hotel's official website for more information
- All the above benefits are only applicable for maximum 2 persons per room per stay
- Upon confirmation, any amendment is subject to our company's discretion
- All prices and conditions are subject to change without prior notice
- Check whether the Security Bureau has issued any [Outbound Travel Alert](#) for your destination before firming up your travel plan to ensure personal safety

費用包括：

- 來回國泰航空經濟客位機票
- 2晚酒店住宿連早餐
- HK\$100,000旅遊保險 [蘇黎世保險(香港) 24小時緊急支援服務+852-2886-3977]
- 0.15%旅遊業賠償基金

小童最少要與兩位成人同行價錢：

- 佔床或加床收費按成人減收： \$330

條款及細則：

- 以上套票價錢以每成人計算，有效日期：2019年7月29日至9月30日；酒店入住必須於9月30日或之前完成
- 訂位代號：Q (指定日子除外) 機票有效期：2-7日
- 雙人房之房種2張單人床或1張雙人床
- 來回程均要最少兩位成人同行，訂位時亦必須最少兩位客人在同一個PNR內
- PNR必須註明住宿酒店名稱及日期如下：
"OSI : KA HTL PKG FARE HOTEL NAME IN DATE OUT DATE"
"OSI : KA SIT - 2 FARE x MIN 2 PASSENGERS TRAVEL TOGETHER"
- 費用並未包括香港機場保安稅、兩地機場稅及燃油附加費(如適用)
- 酒店星級只供參考，詳情請到訪酒店官方網頁查詢
- 以上優惠每次每房最多適用於兩位客人
- 於機票及酒店確認後，如需更改本公司擁有最終決定權
- 所有費用如有更改，恕不另行通知
- 為確保自身安全，旅客在落實行程前，應留意保安局有沒有對目的地發出**外遊警告**